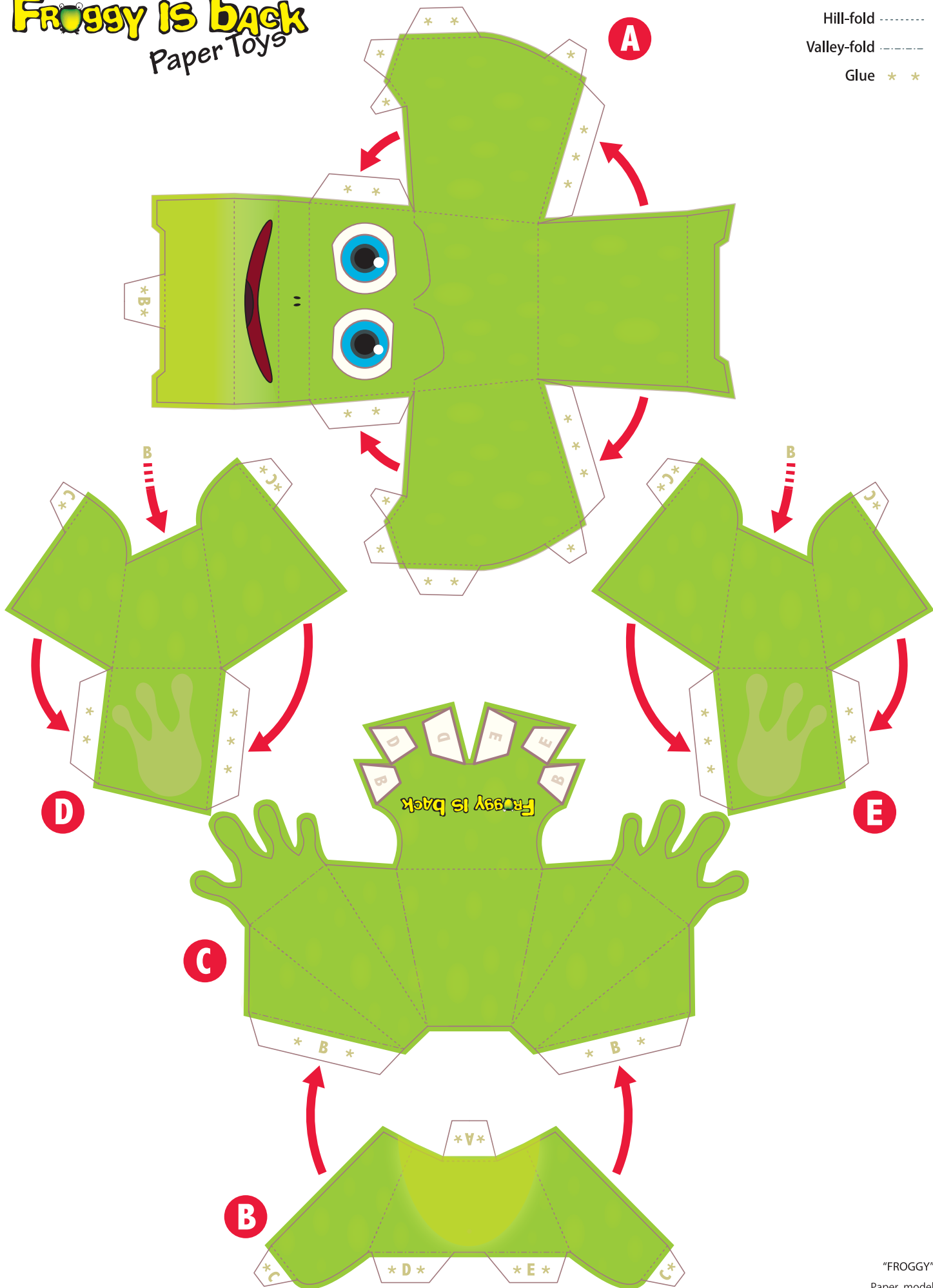


FROGGY IS BACK

Paper Toys

- Cut ———
- Hill-fold (dashed line with dots above)
- Valley-fold (dashed line with dots below)
- Glue * *



"FROGGY"
 Paper model
 One A4 size sheet
 Designed by Fabio Saitta
 reibemail@gmail.com

■ Assembly Instructions

- For folding parts, first use a dead ball point pen or other pointed tool to make a light crease along the fold line.
- Cut carefully along the outer line with cutting blade or scissors.
- Fold all these parts upward or downward as indicated.
- Finally, assemble in order with the glue.

■ Items of Caution

- Take care when using sharp or pointed objects or when using bladed cutting tools.

Cut ———

Hill-fold - - - - -

Valley-fold - - - - -

Glue * * *

"FROGGY"

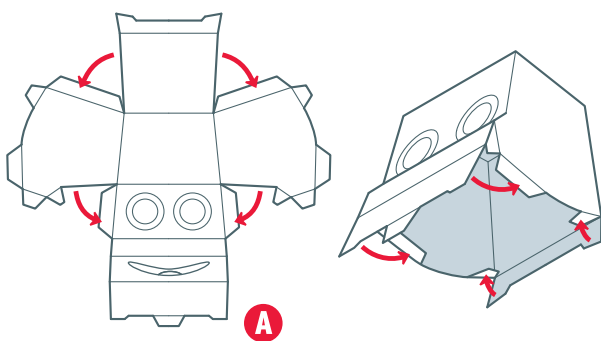
Paper model

One A4 size sheet

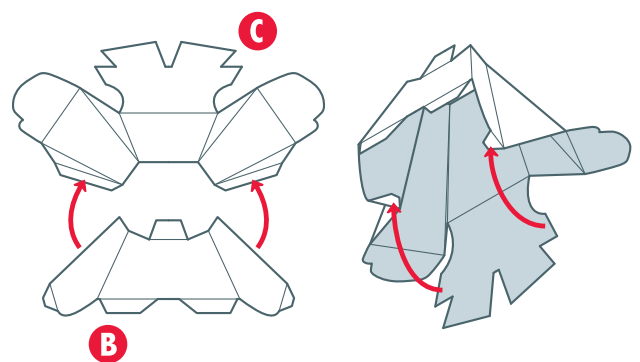
Designed by Fabio Saitta

reibemail@gmail.com

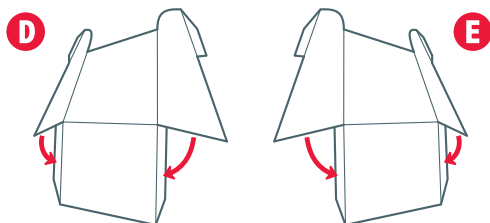
1



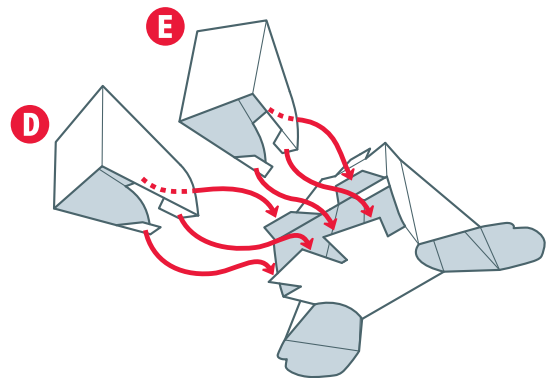
2



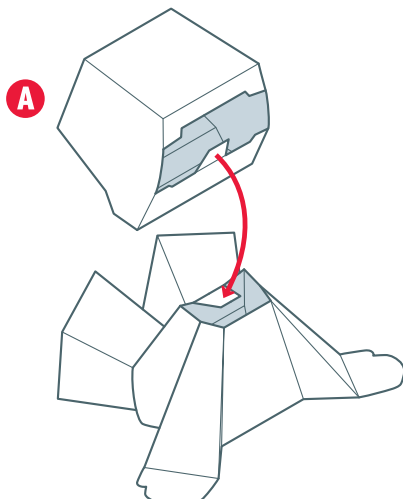
3



4



5



6

